

BOOK GRÁFICO DE PROYECTOS



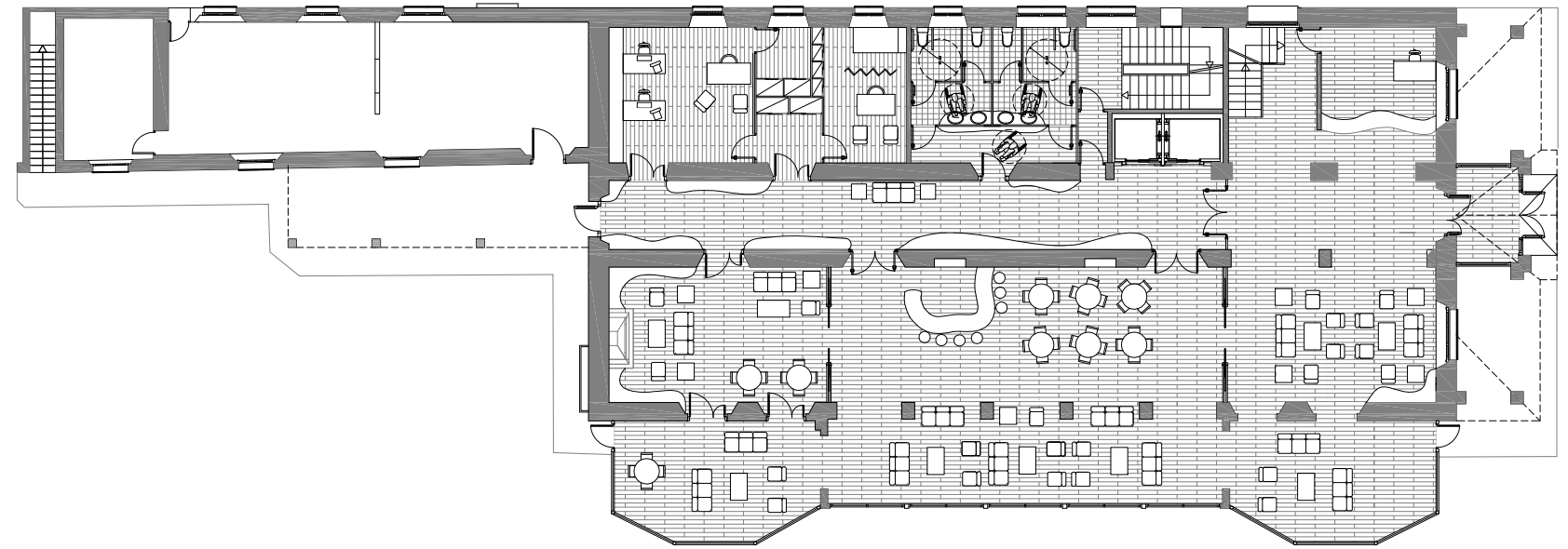
ENRIQUE ROVIRA-BELETA CUYÀS. Arquitecto.

Loreto, 54. Pral, 2a. 08029 Barcelona. www.rovira-beleta.com



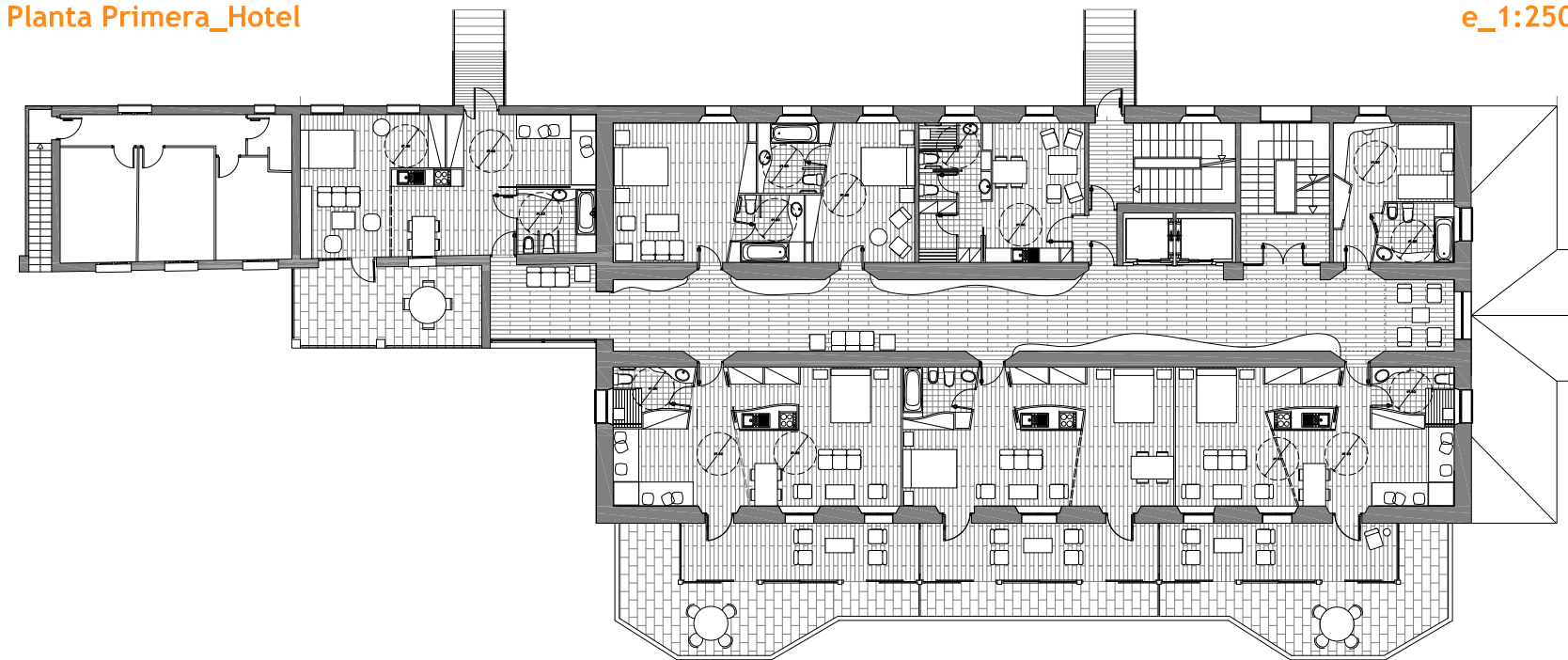
Planta Baja_Recepción y Salas Comunes

e_1:250



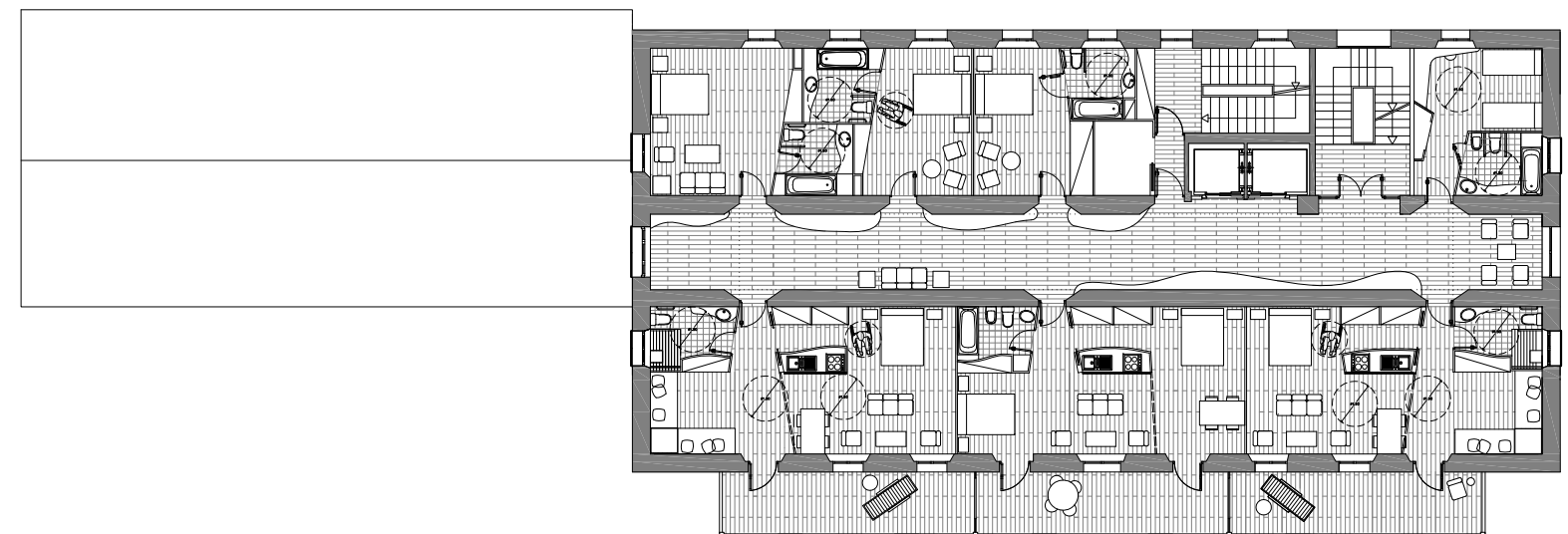
Planta Primera_Hotel

e_1:250



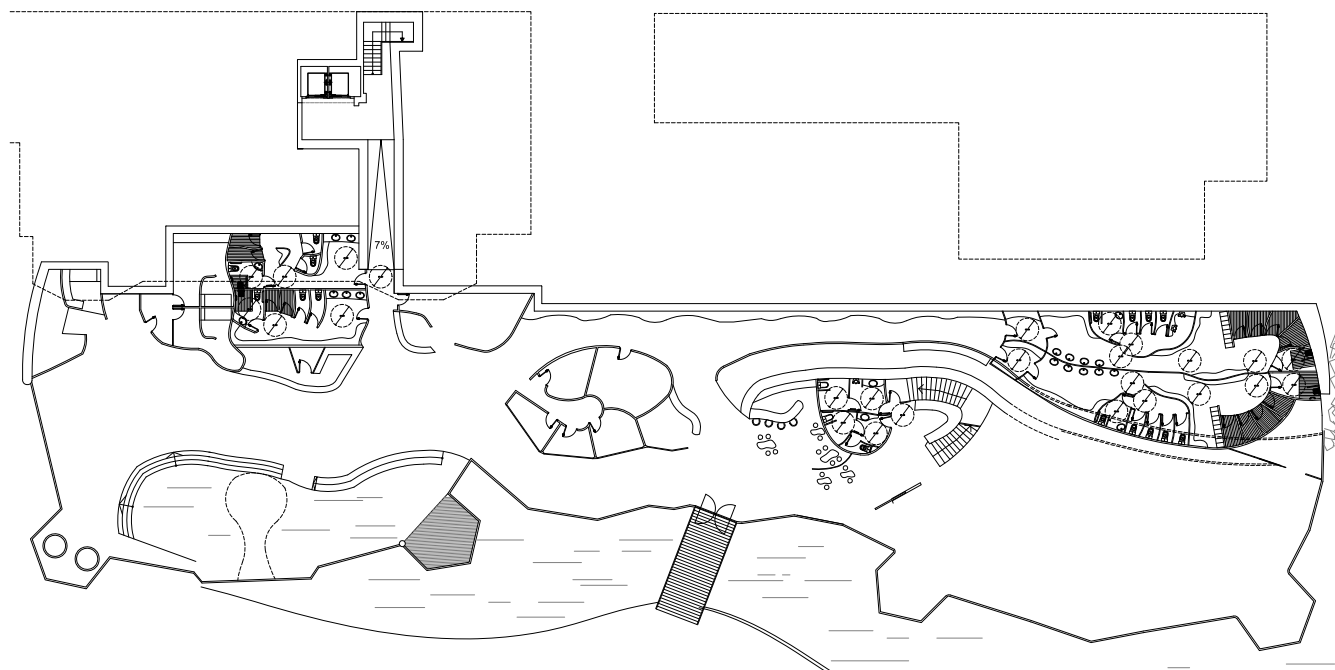
Plantas Segunda, Tercera y Cuarta_Hotel

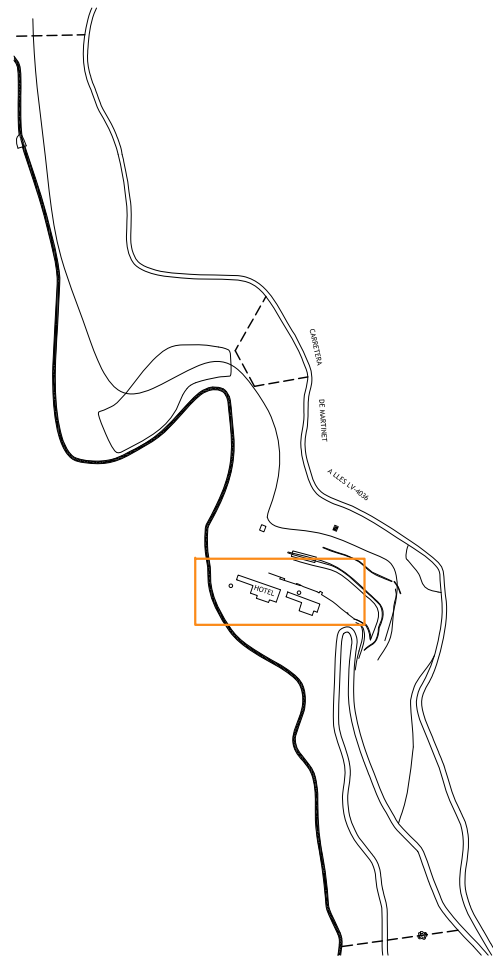
e_1:250



Planta Sotano_Balneario

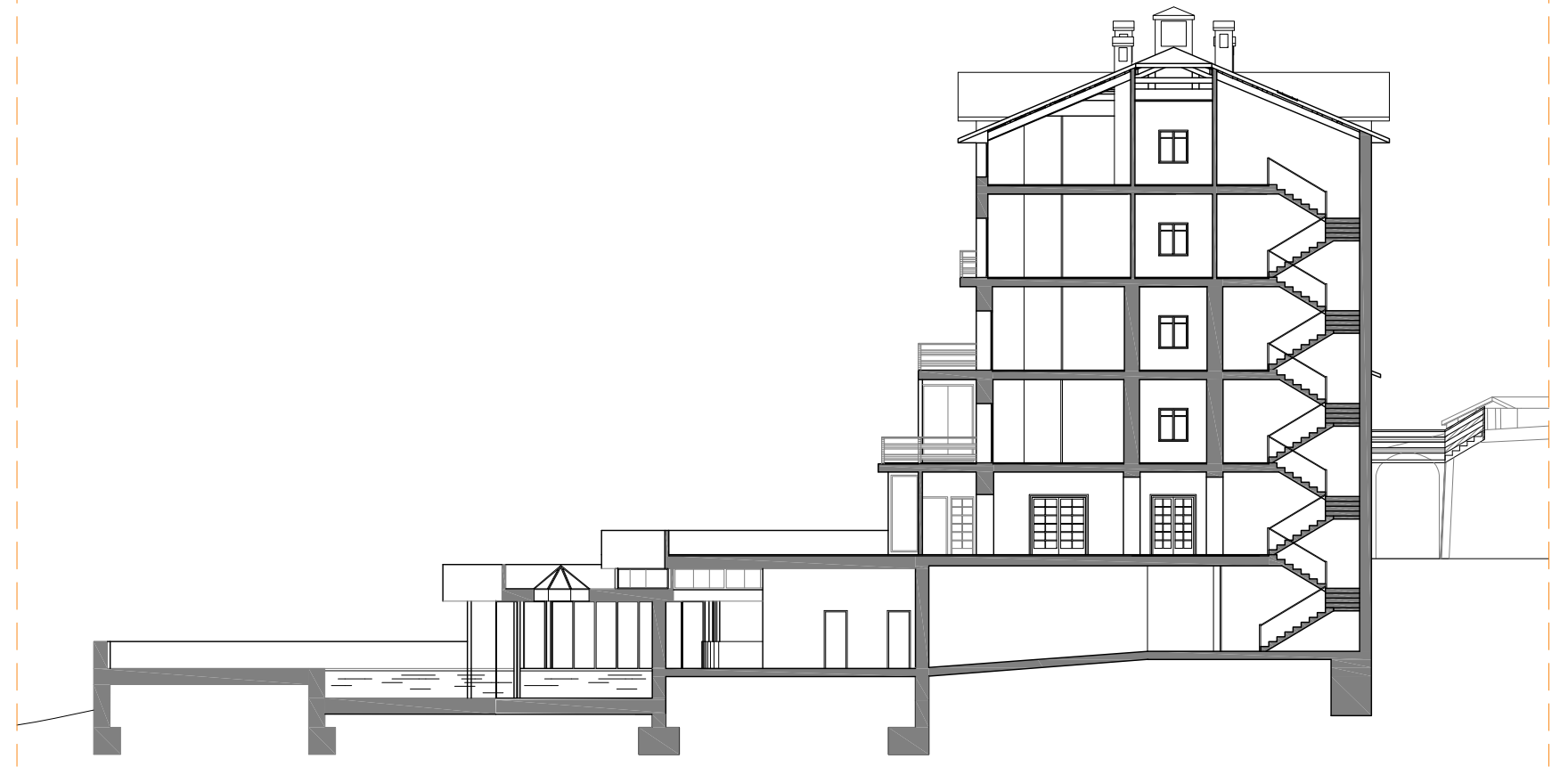
e_1:500





Sección Transversal

e_1:250



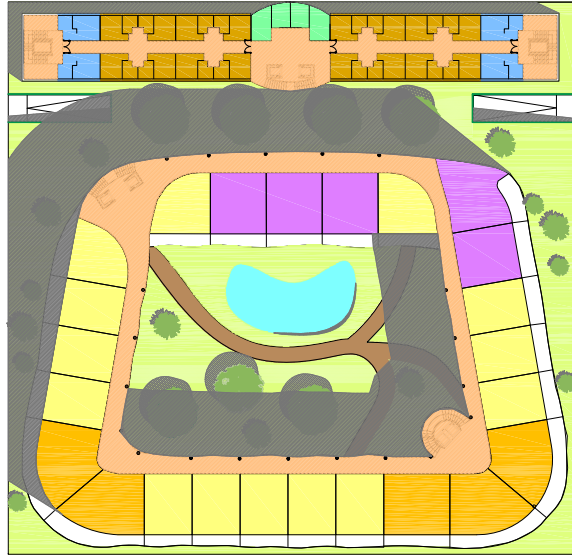
Fachada Principal

e_1:300



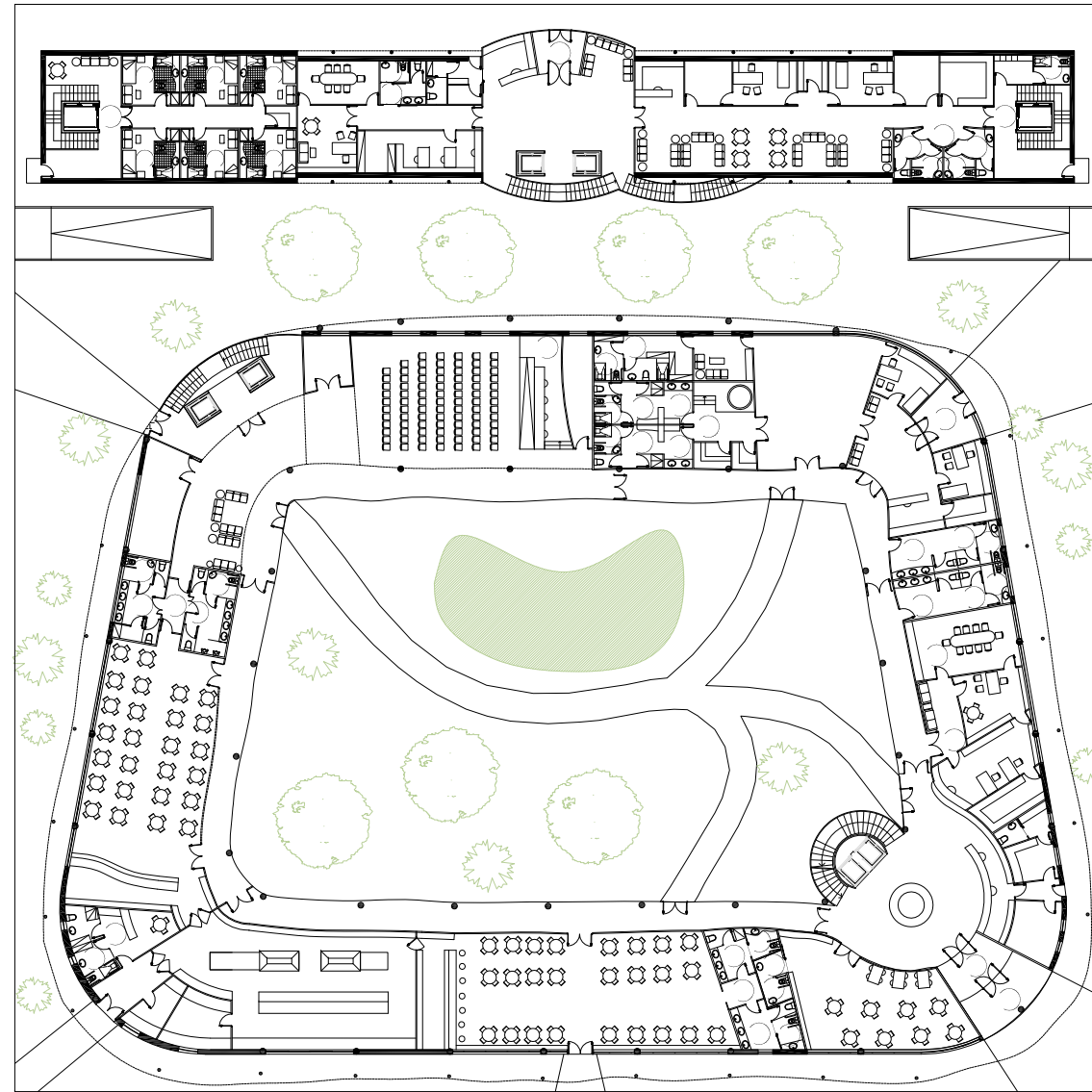
Emplazamiento

e_1:1000



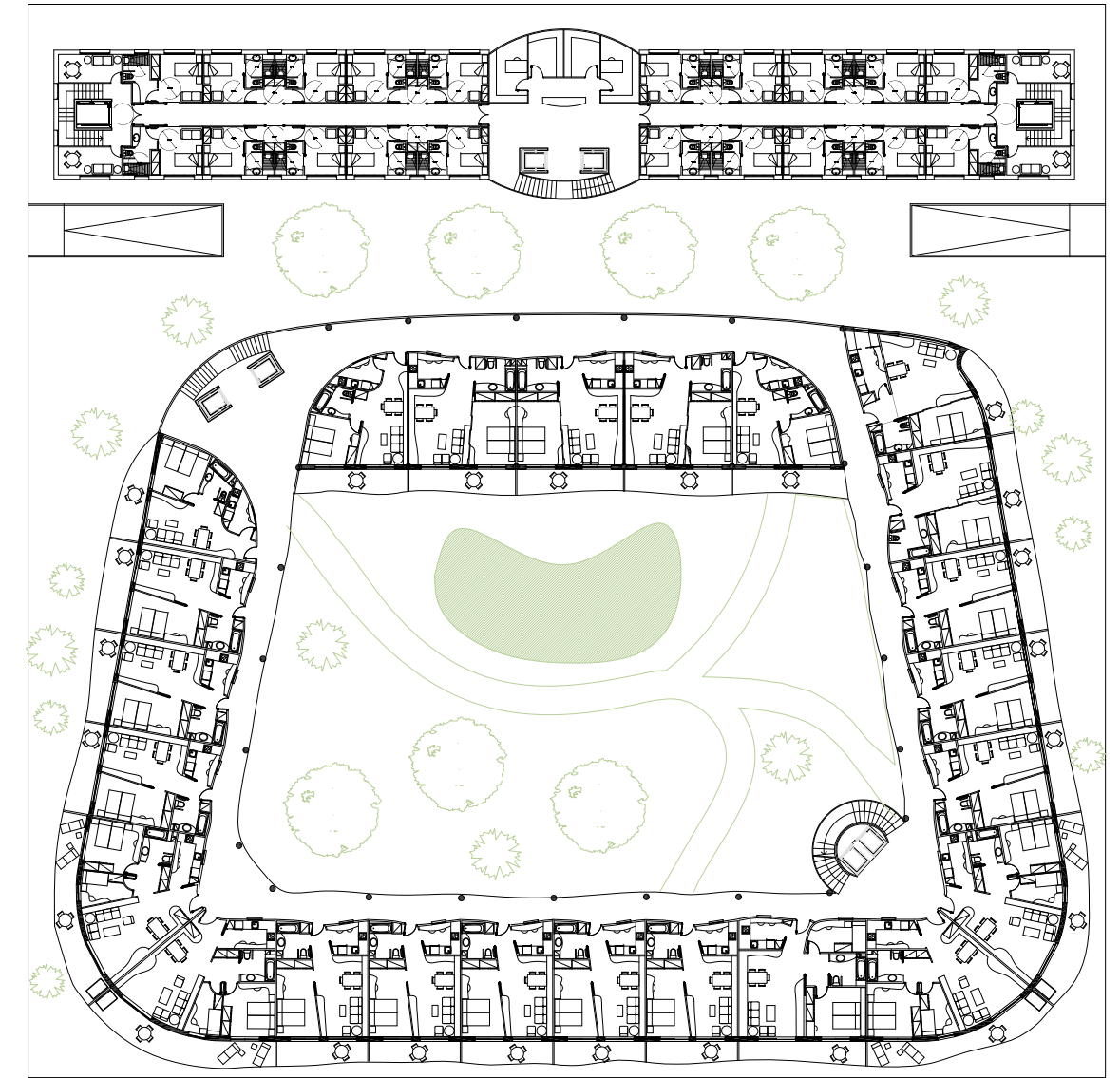
Planta Baja

e_1:500



Planta Primera, Segunda y Tercera

e_1:500



Fachada Norte

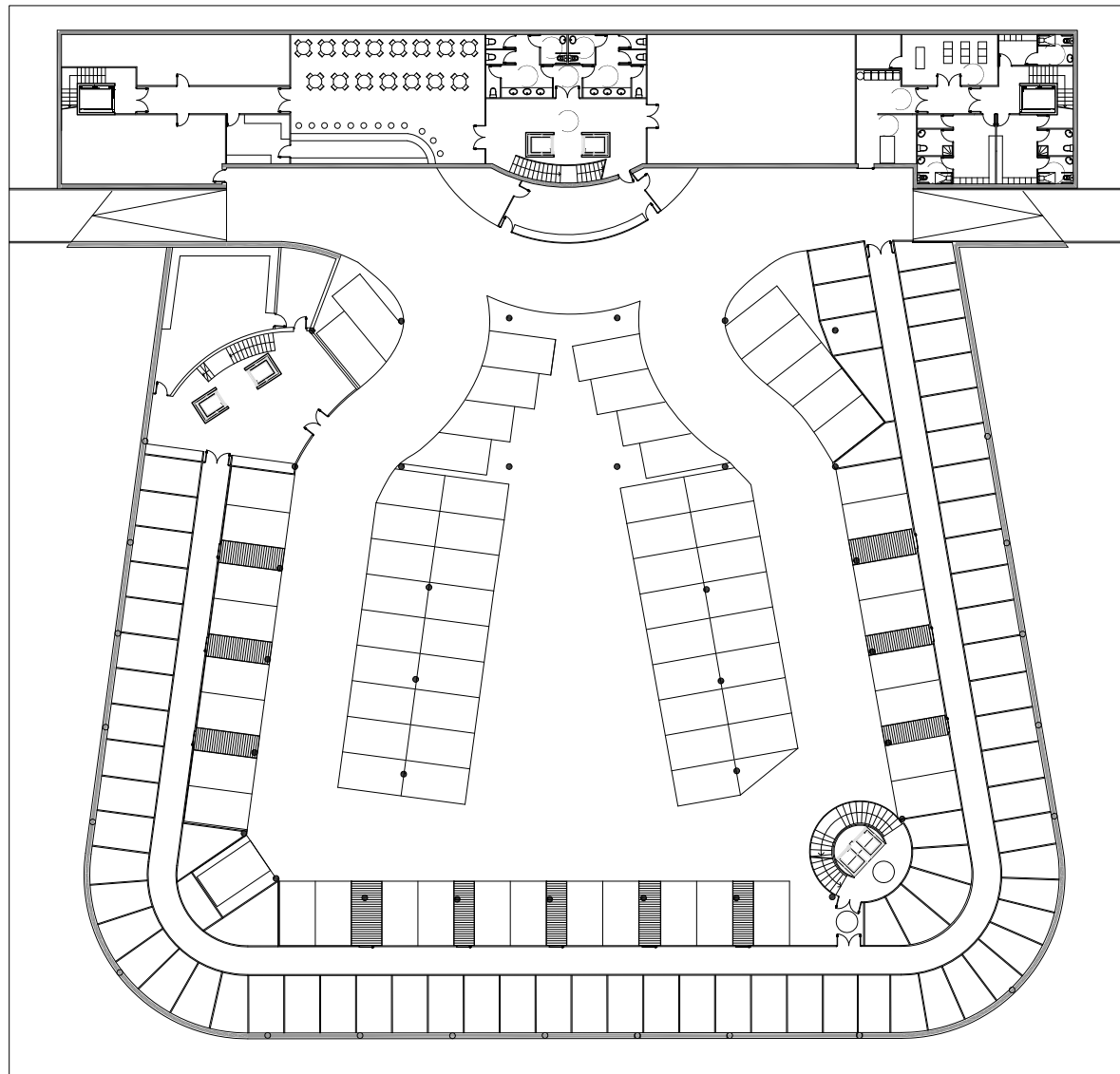


Fachada Sur



Planta Sotano

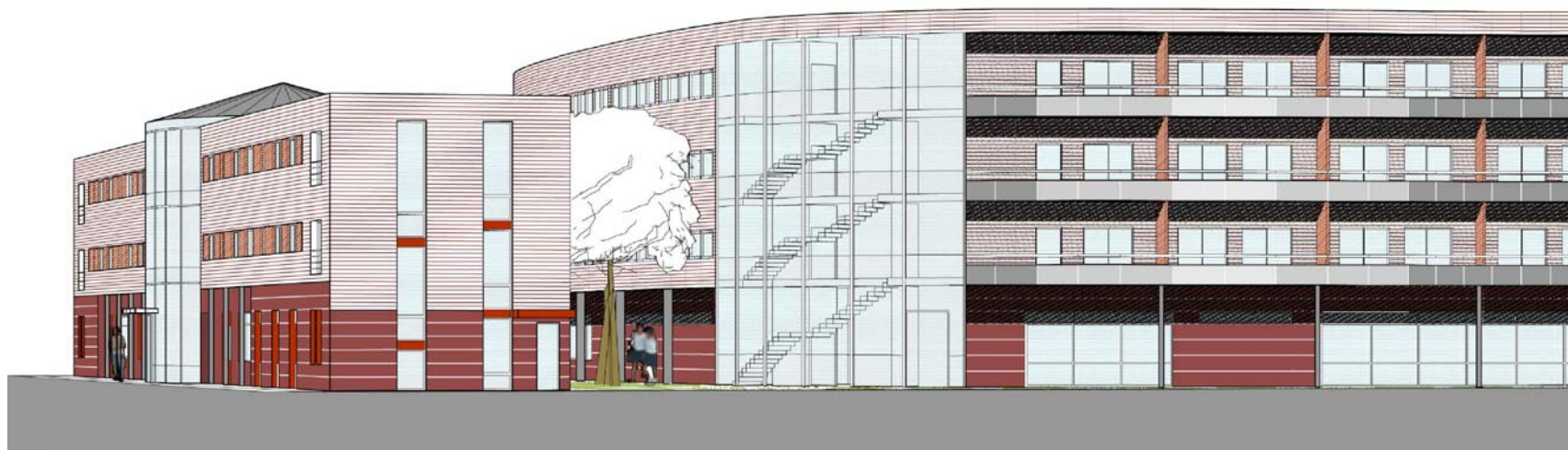
e_1:500



Fachada Este

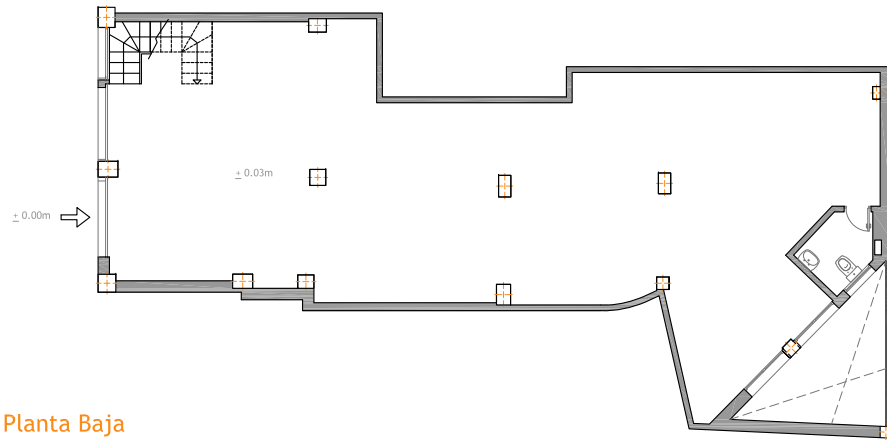


Fachada Oeste

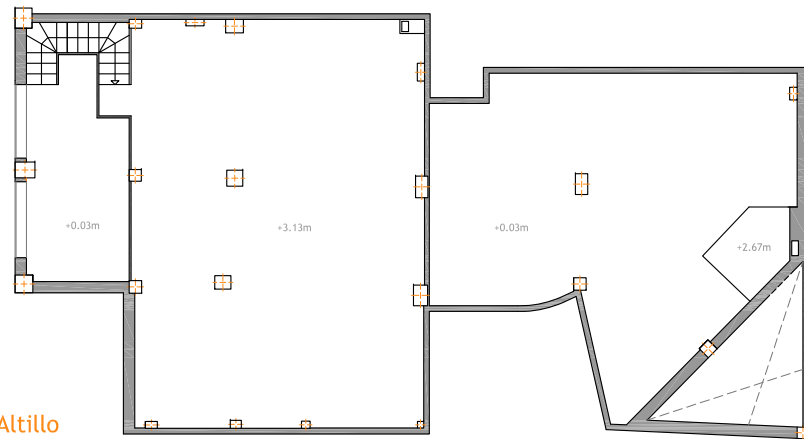


Estado Actual

e_1:200



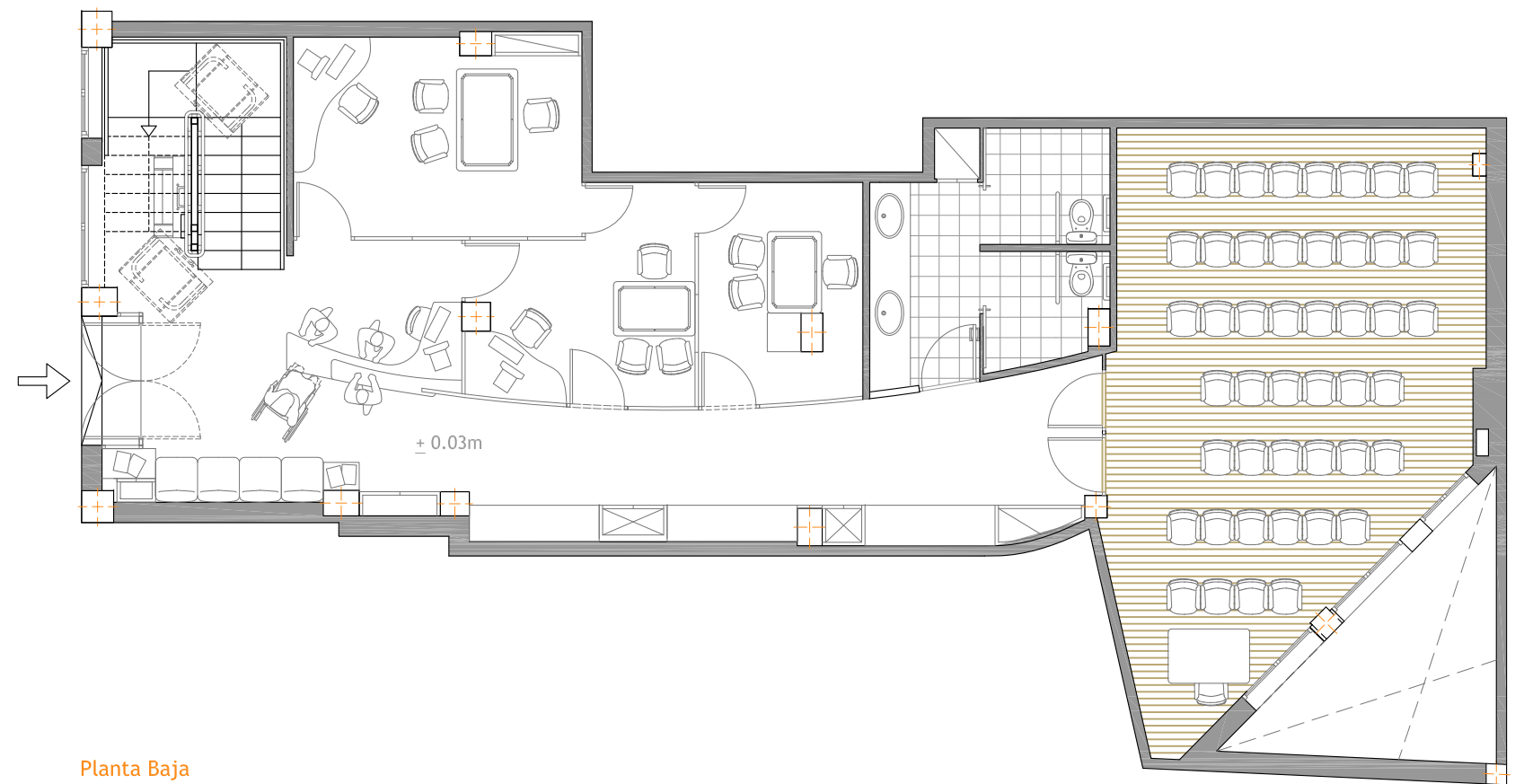
Planta Baja



Planta Altillo

Proyecto

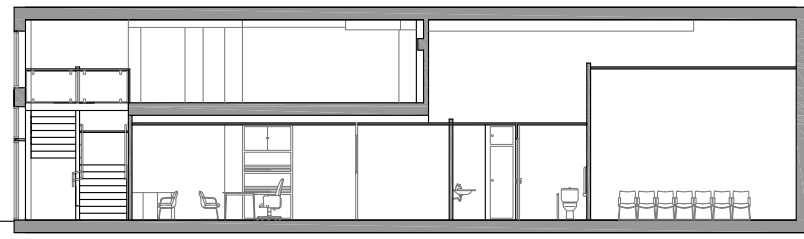
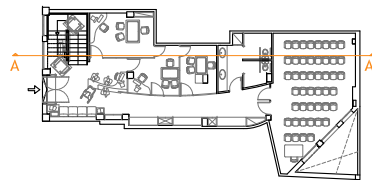
e_1:100



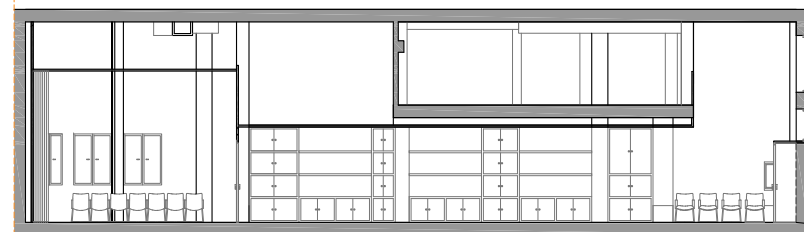
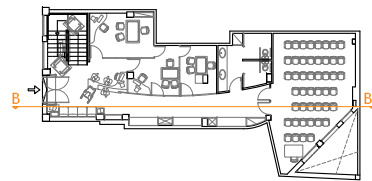
Planta Baja

SECCIONES PROYECTO

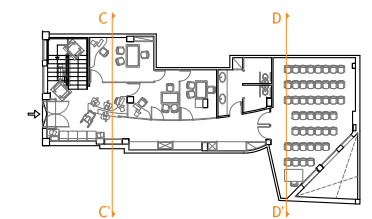
e_1:200



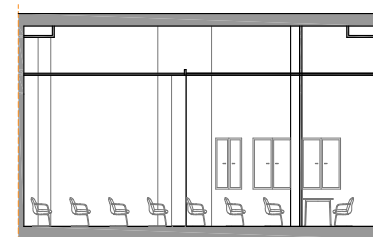
Sección A-A'



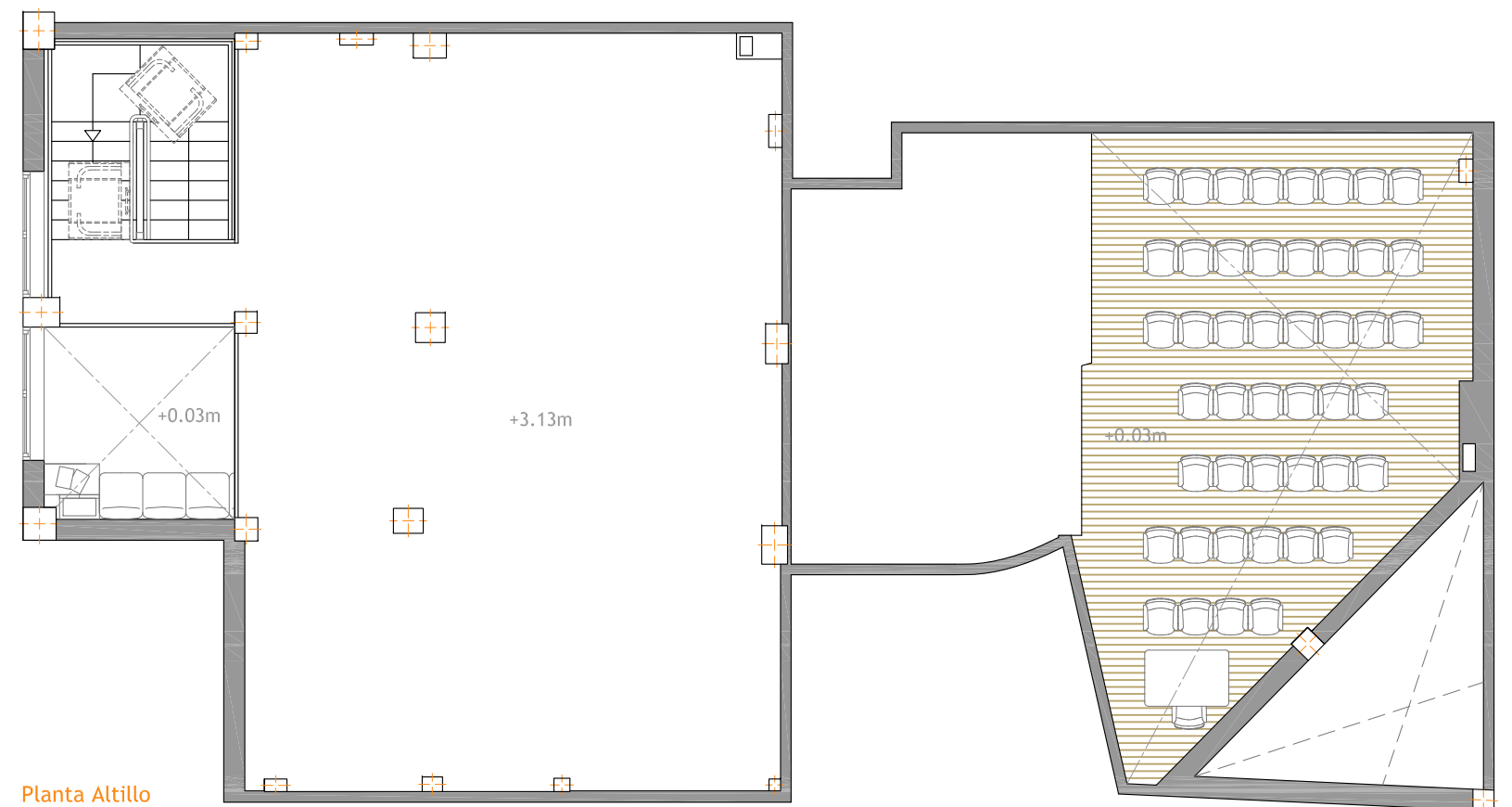
Sección B-B'



Sección C-C'



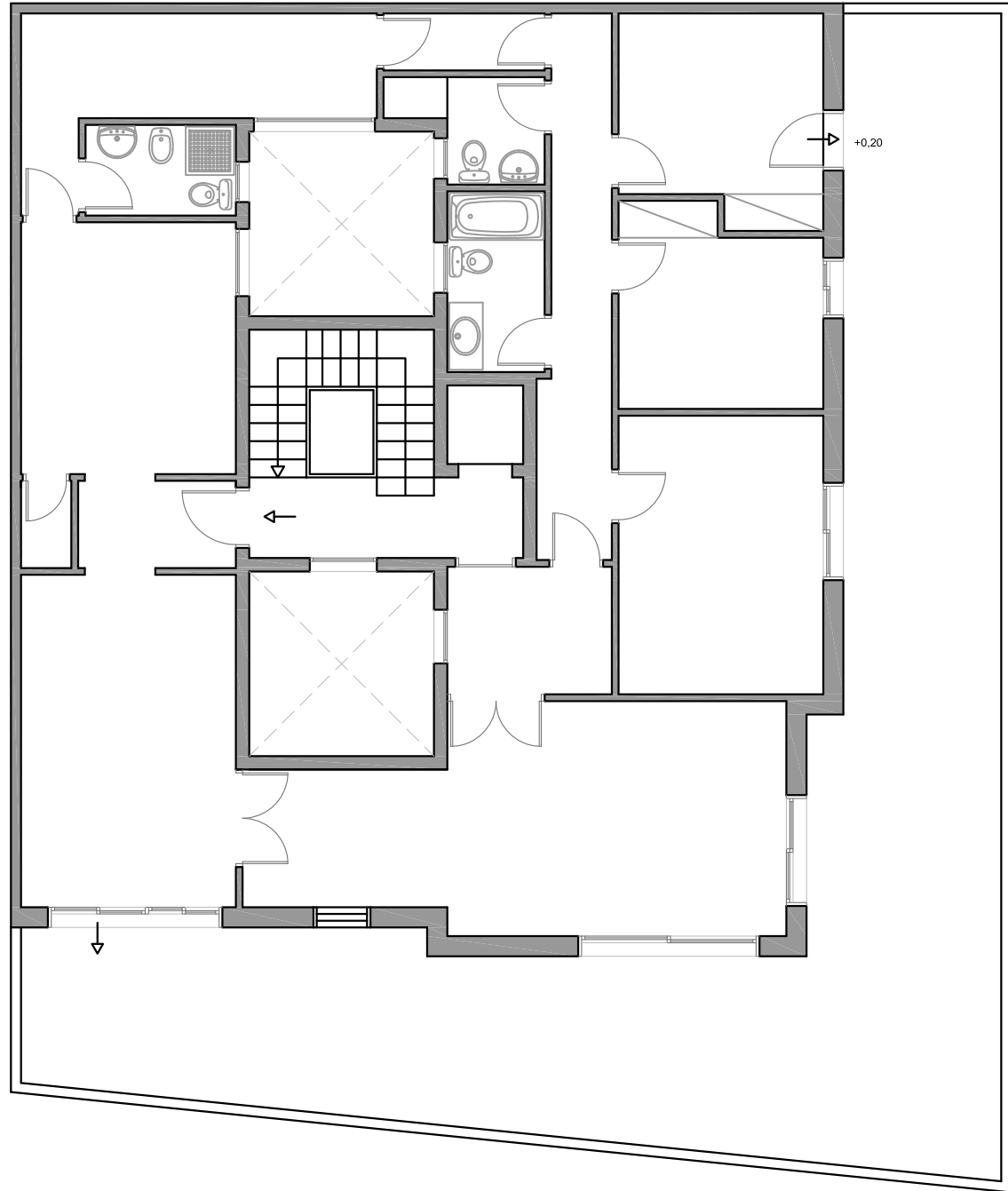
Sección D-D'



Planta Altillo

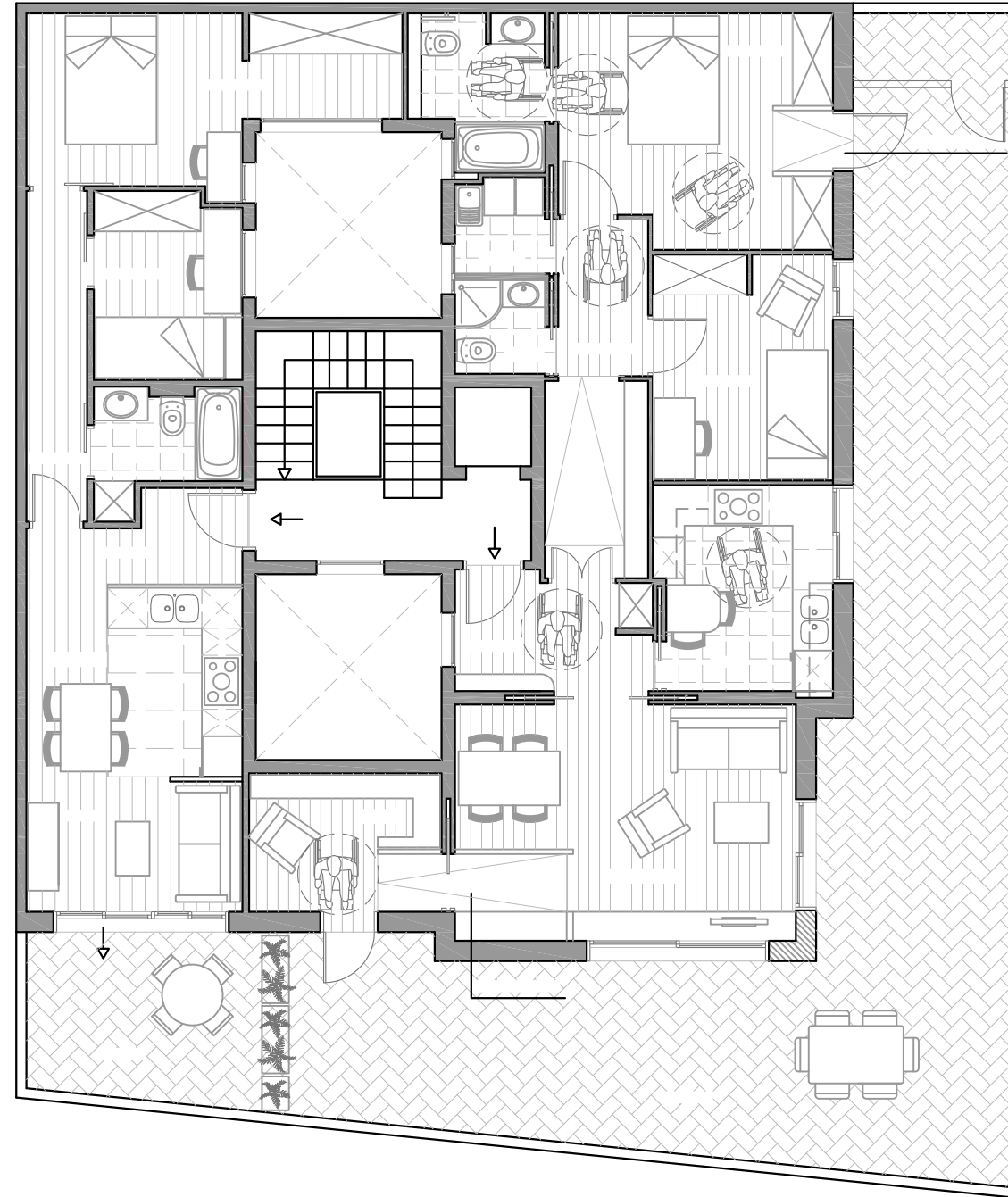
Estado Actual

e_1:100



Proyecto

e_1:100

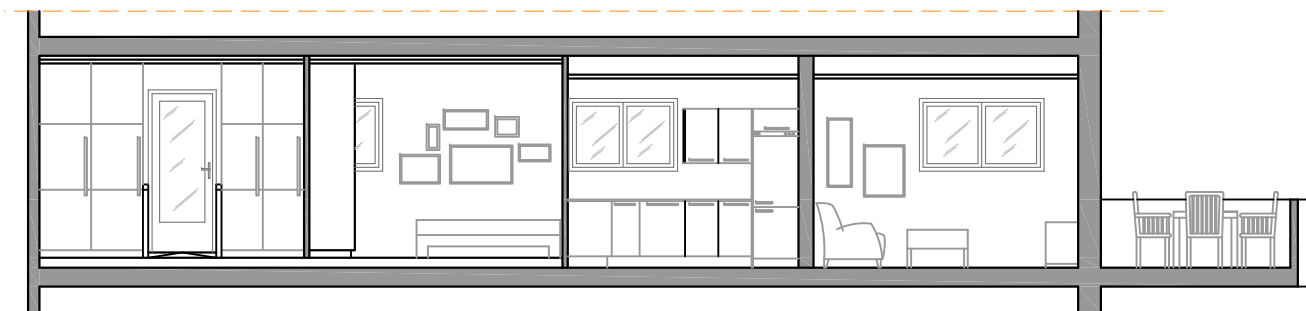


Secciones

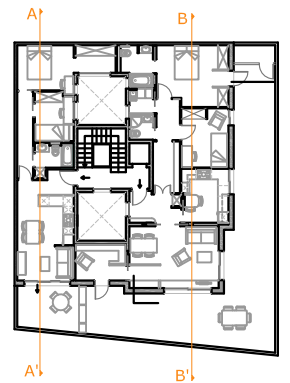
e_1:100



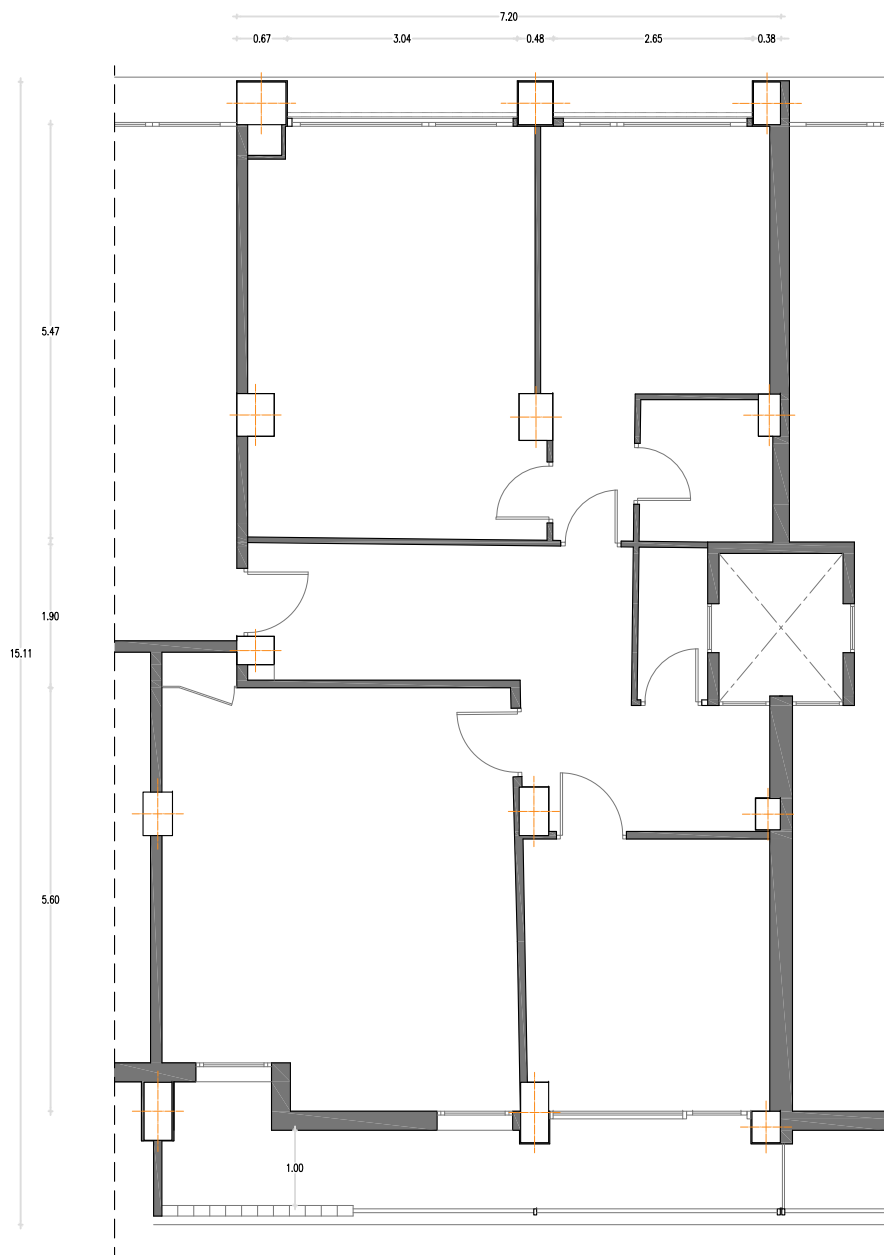
A-A'



B-B'

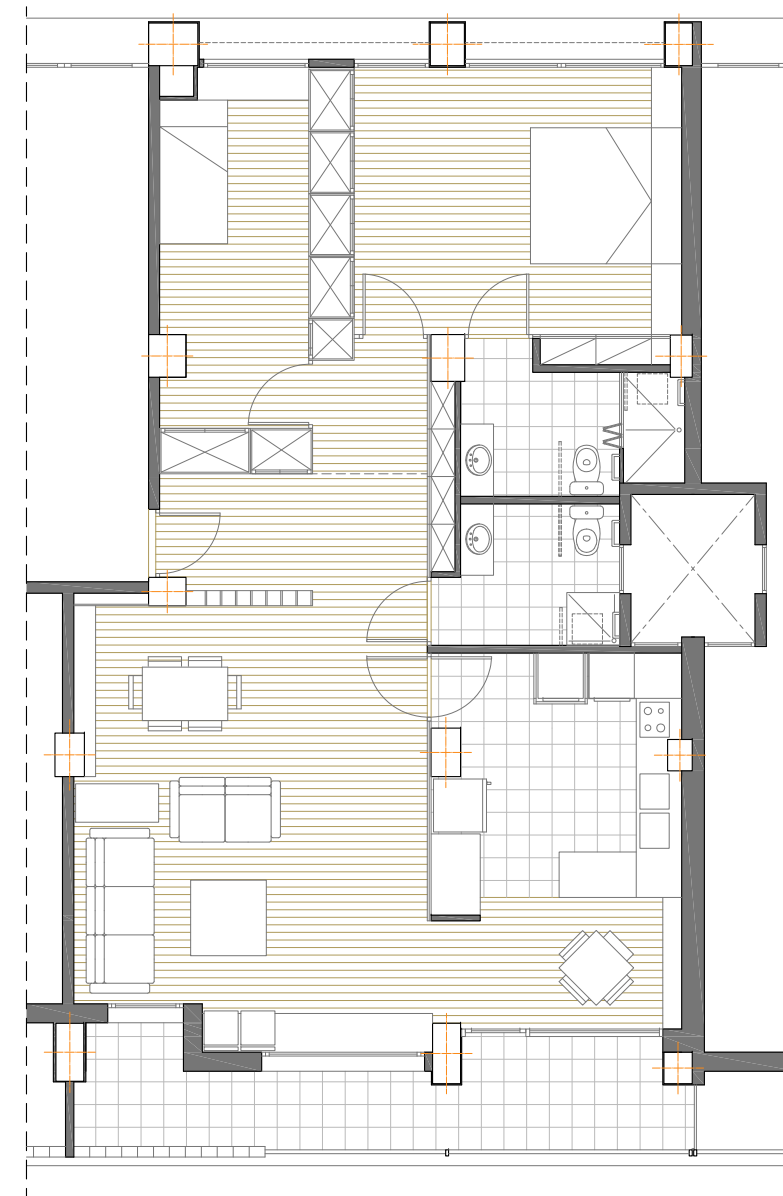


Estado Actual



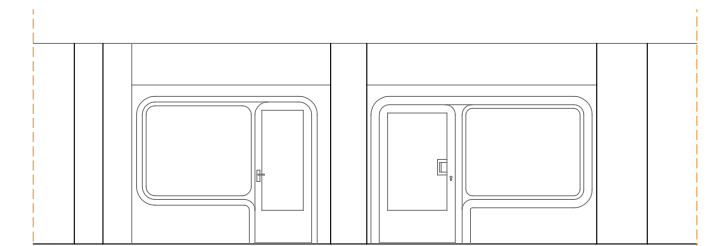
e_1:100

Proyecto

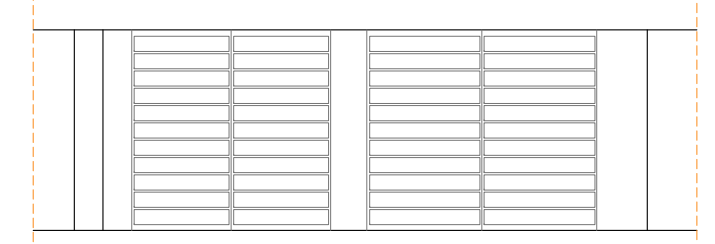


e_1:100

Fachada Travessera de les Corts e_1:100

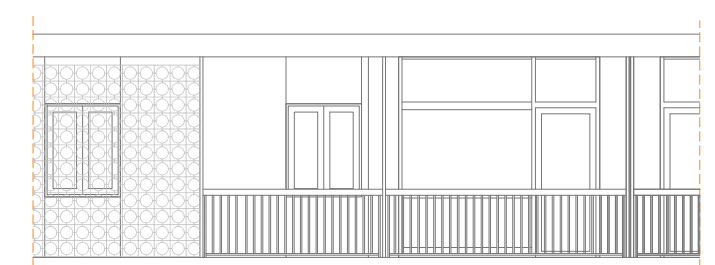


Estado Actual



Proyecto

Fachada Interior Plaza e_1:100

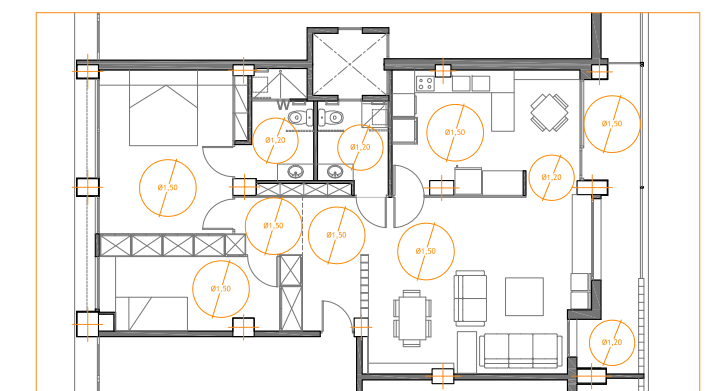


Estado Actual



Proyecto

Esquema Espacio Accesibles e_1:200



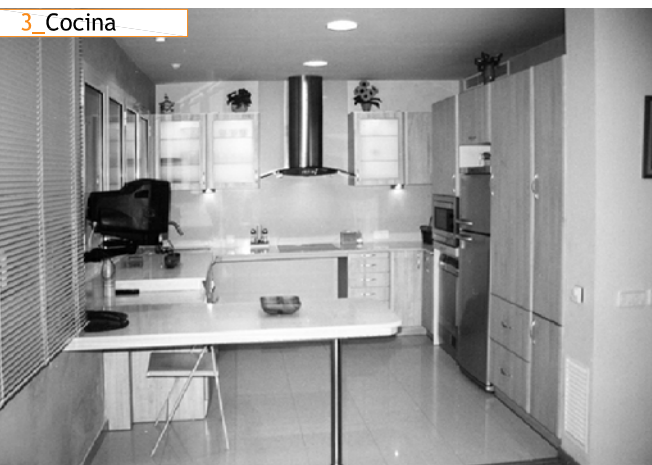
1 Recibidor



2 Interior Armarios



3 Cocina

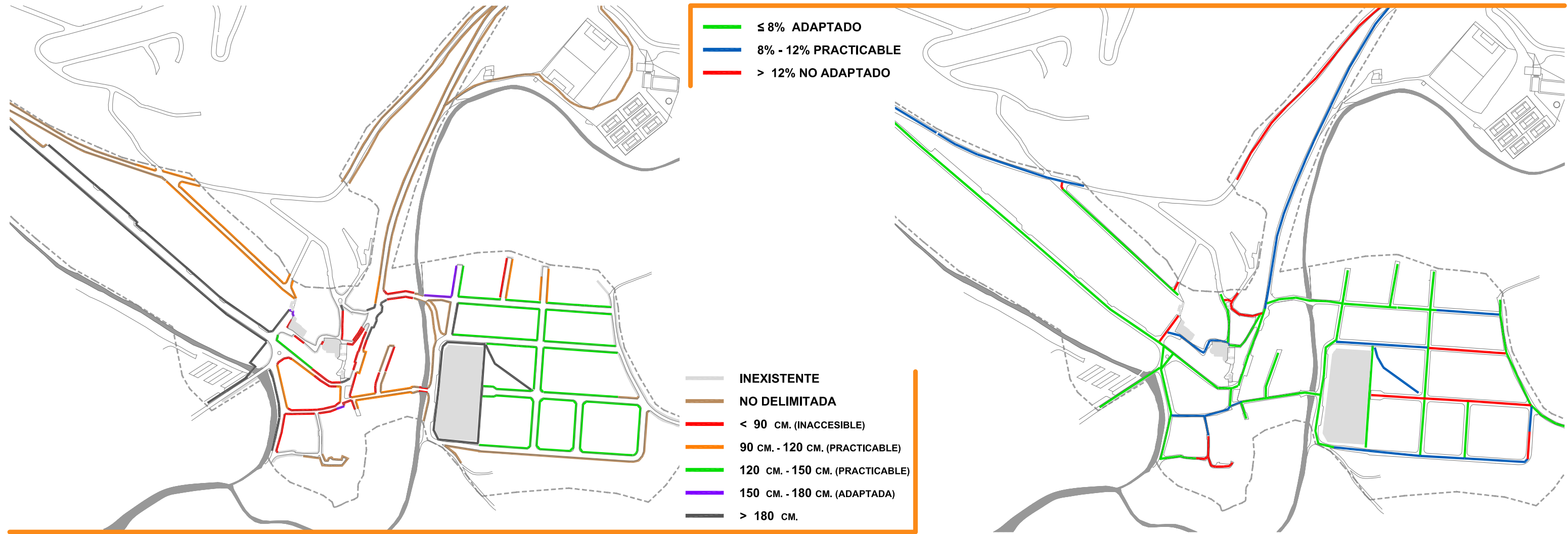


Amplitud de Aceras Actual

e_1:5000

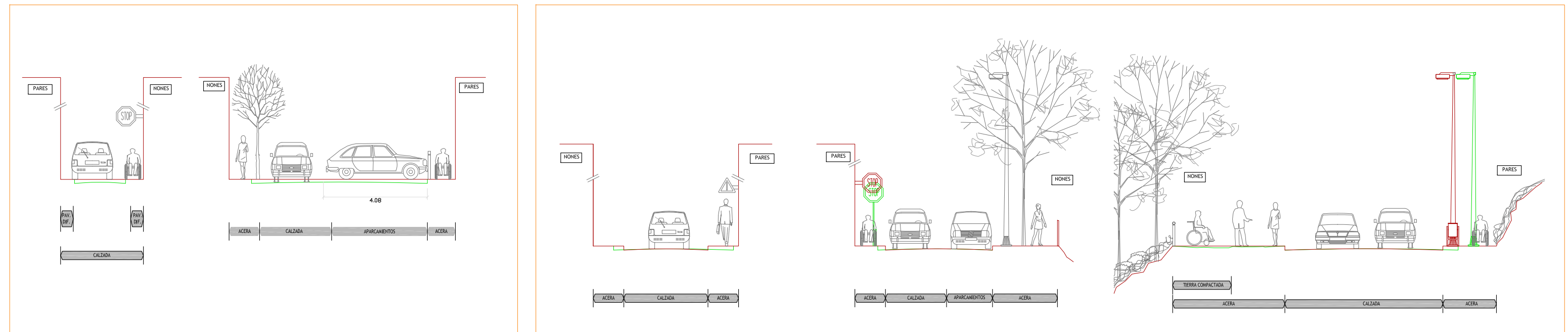
Pendientes Longitudinales de Calles

e_1:5000



Secciones de Calles

e_1:150



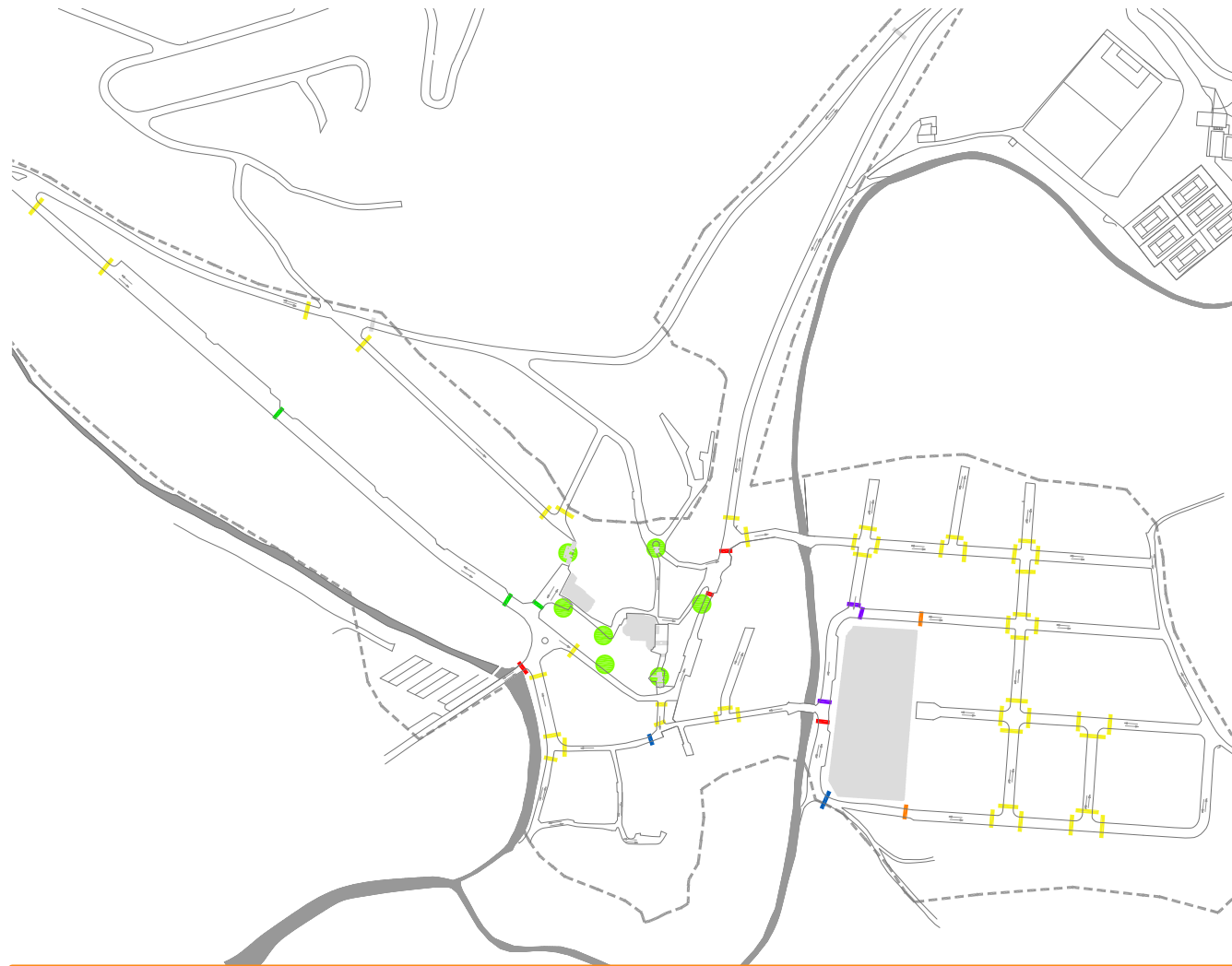
Plataforma única

Transitos Diferenciados

Pasos de Peatones, Vados y Escaleras

e_1:5000

Imagenes Estado Actual



- PASOS DE PEATONES CON UN VADO ADAPTADO
- PASOS DE PEATONES CON VADOS ADAPTADOS
- PASOS DE PEATONES CON UN VADO NO ADAPTADO
- PASOS DE PEATONES CON VADOS NO ADAPTADOS
- PASOS DE PEATONES SIN VADOS
- PASOS DE PEATONES ELEVADOS
- PASOS DE PEATONES SIN VADO (SIN SEÑALIZAR)
- ESCALERAS NO ADAPTADAS



Soluciones para Pasos de Peatones Adaptados

e_1:250

